

# POPULATION OF SERBIA AT THE BEGINING OF THE 21st CENTURY

Vladimir Nikitović

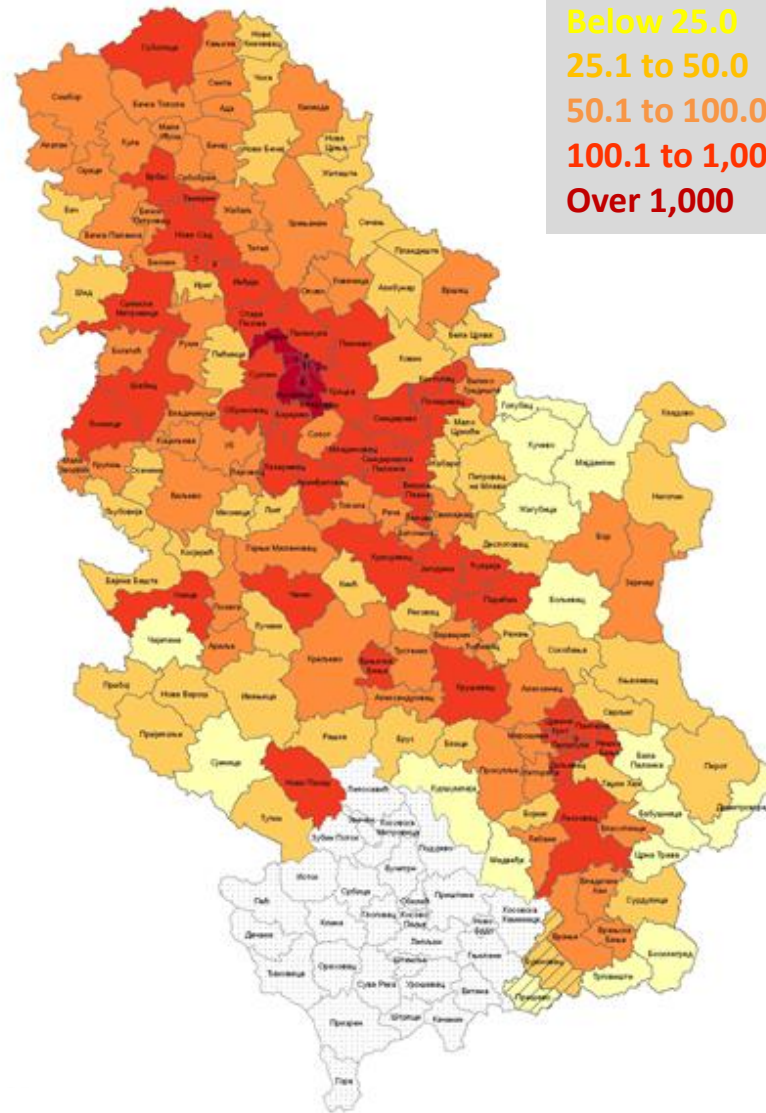
Demographic Research Center  
Institute of Social Sciences, Belgrade



- Population decline and failures in addressing this issue
- Sociodemographic characteristics of childless women aged 30-34 years
- Internal migration as a factor of the unbalanced population spatial distribution
- Consequences of intensive population ageing
- Education and computer literacy of population
- Marital and extramarital unions
- Labour force and economic activity decline

# Population density across municipalities

— inhabitants per sq. km,  
Census 2011 —

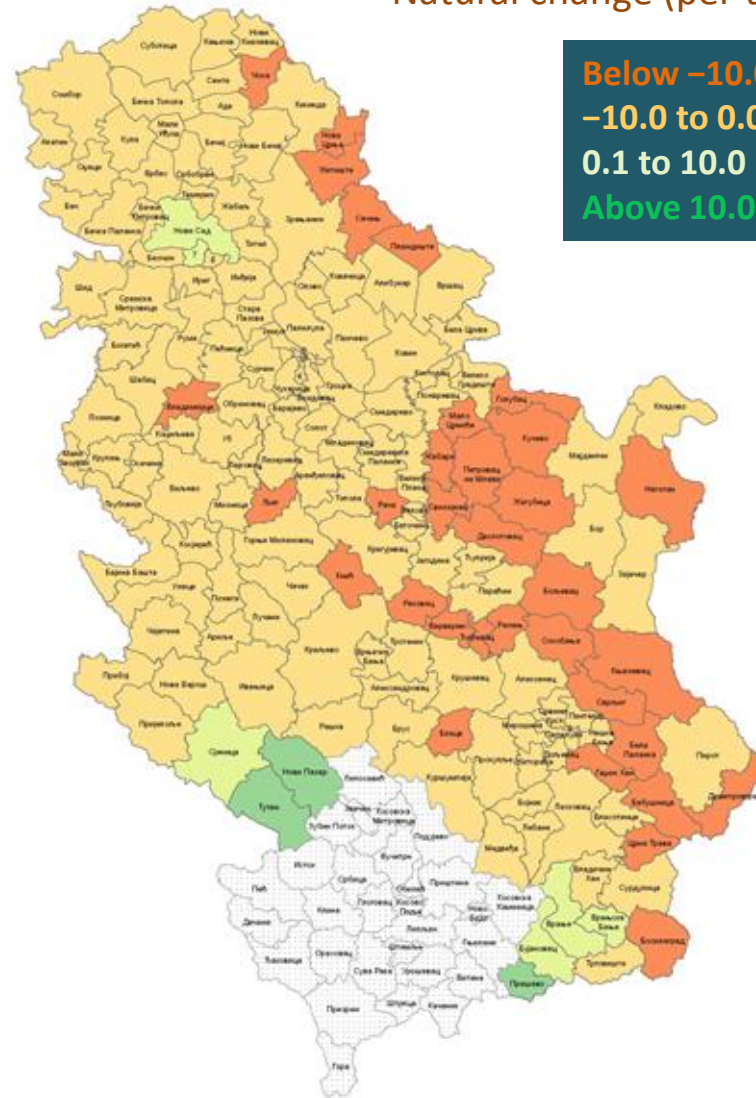
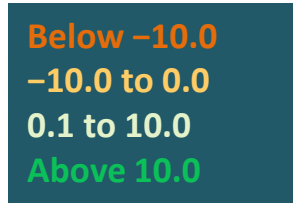


Authors: B. Đurđev, D. Arsenović

# The average annual rate of natural change, 2002–2011

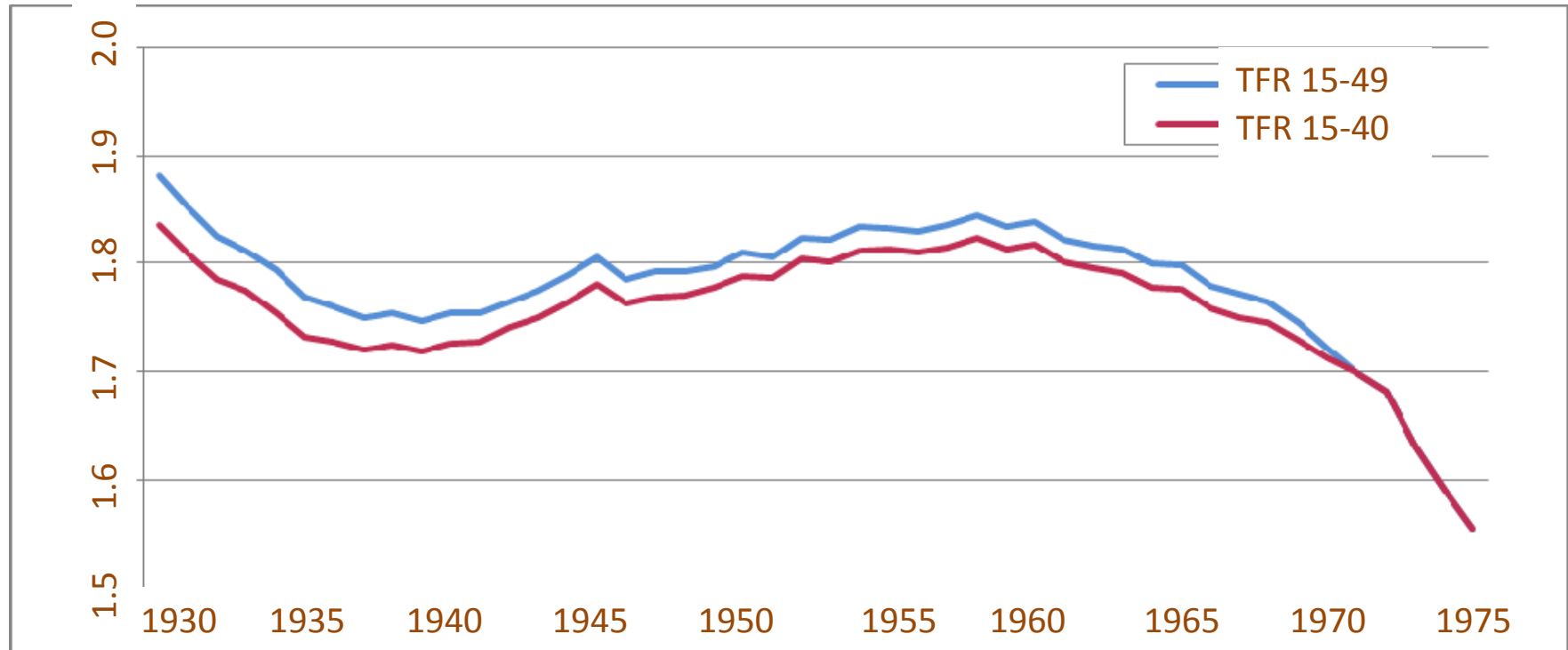
— municipalities, Census 2011 —

Natural change (per thousand)



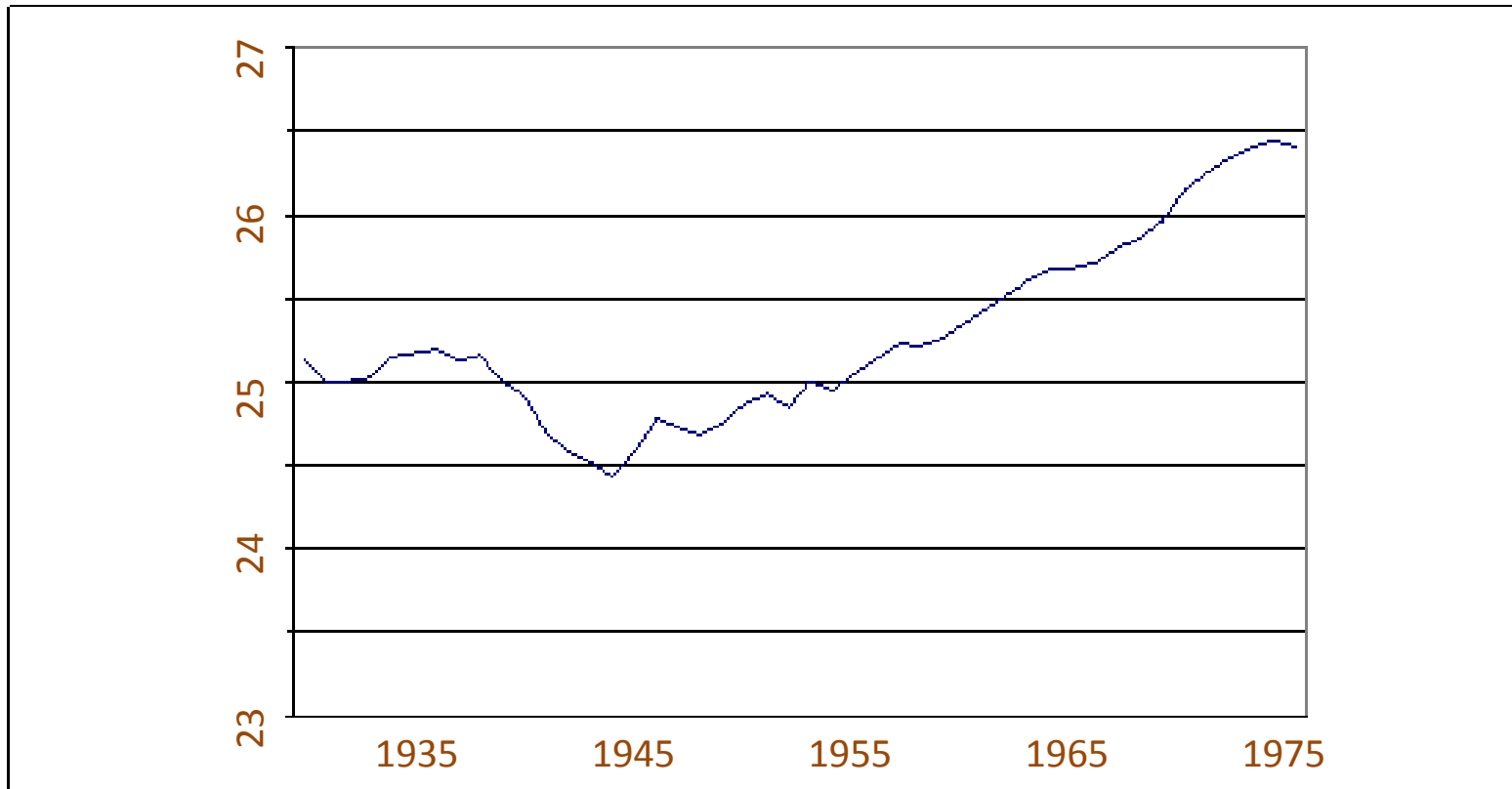
Authors: B. Đurđev, D. Arsenović

## Average number of live births per woman in Serbia — generations of women born 1930-1975, Census 2011 —



Author: M. Rašević

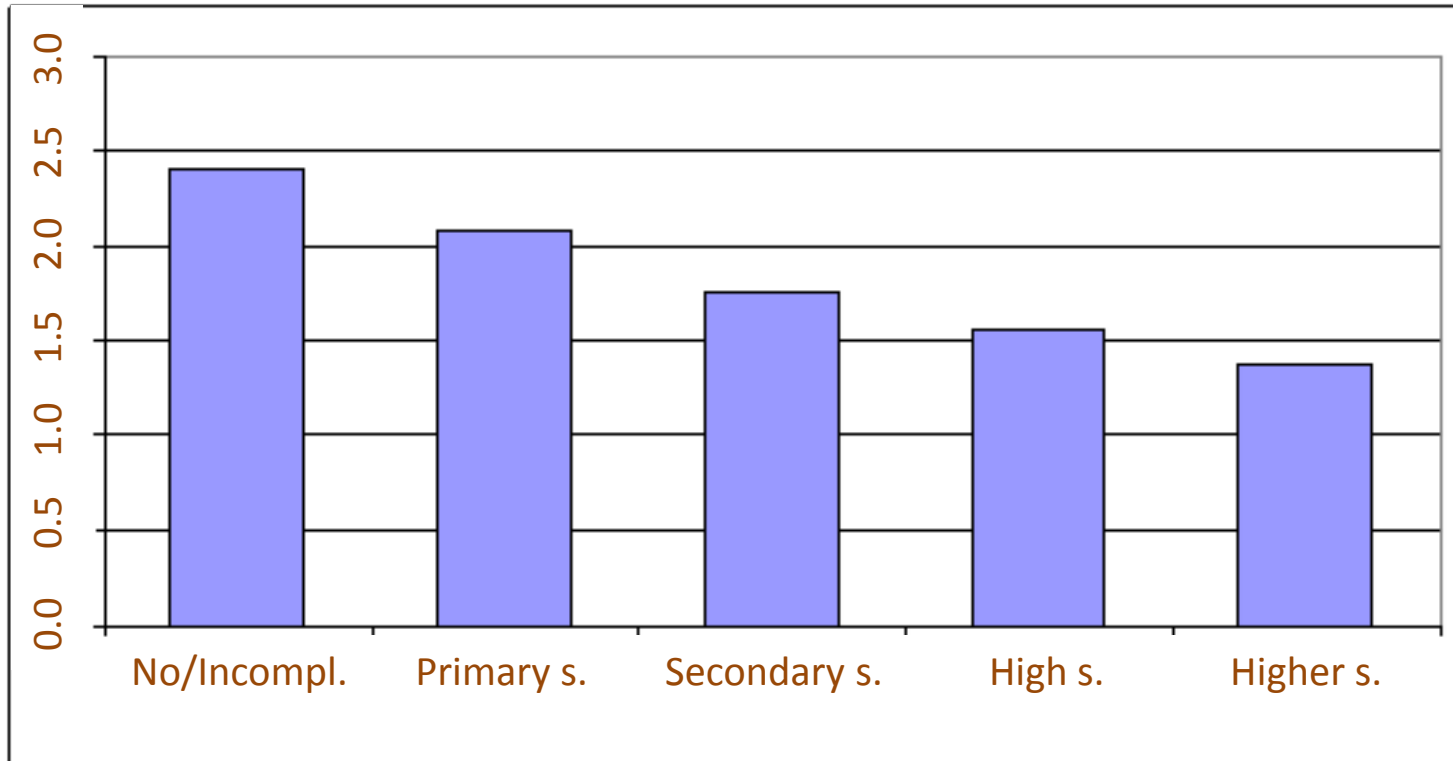
## Average age of mother at childbirth — generations of women born 1930-1975, Census 2011 —



Author: M. Rašević

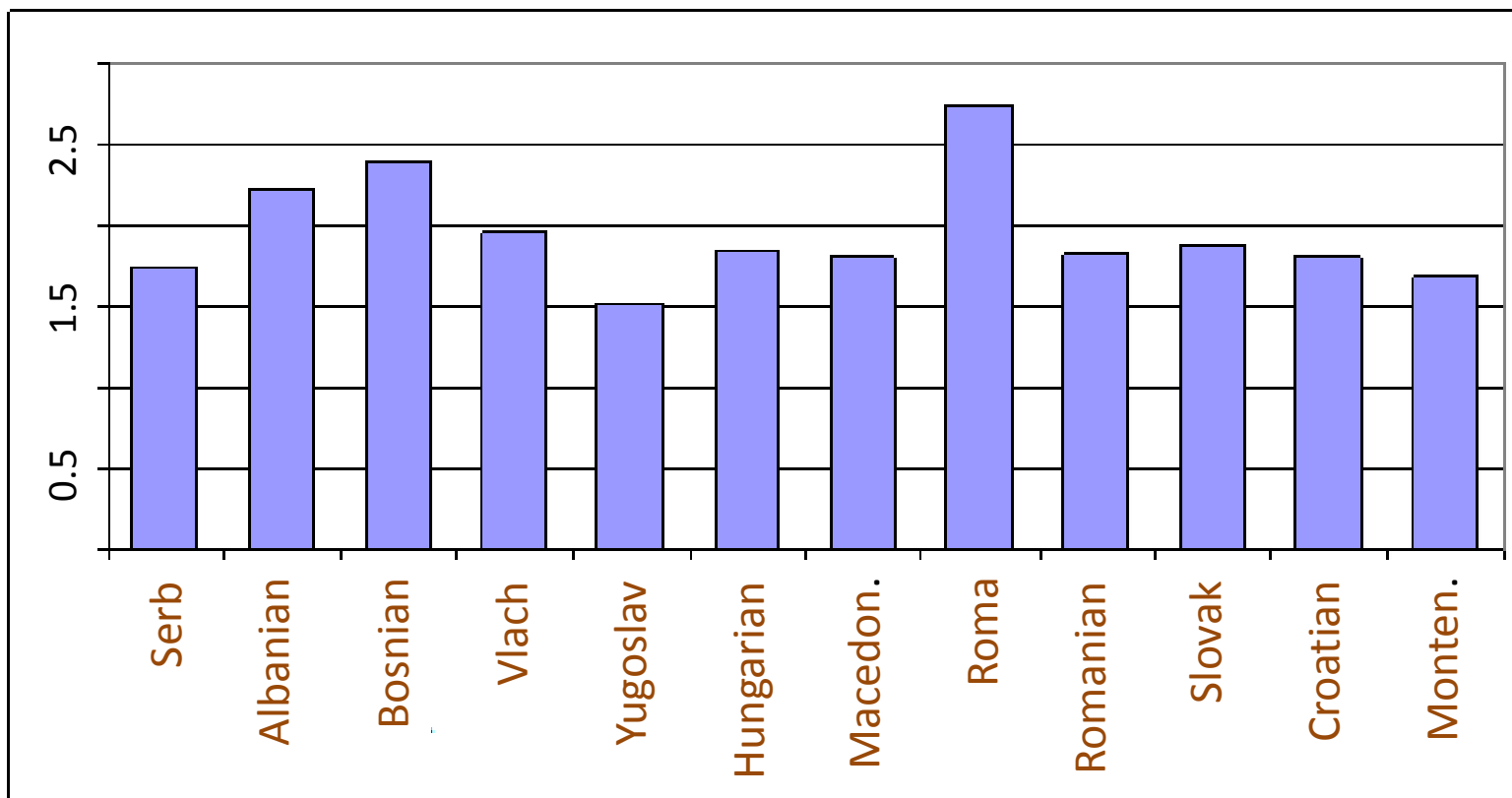


## Average number of live births per woman by educational attainment — women aged 40-49 years, Serbia, Census 2011 —



Author: M. Rašević

## Average number of live births per woman by ethnicity — women aged 40-49 years, Serbia, Census 2011 —



Author: M. Rašević



# Average number of live births per woman across municipalities

— women aged 40-49 years, Census 2011 —



Below 1.50  
 1.50 – 1.89  
 1.90 – 2.09  
 2.10 and above

Author: M. Rašević

## Socio-demographic characteristics of the childless women aged 30-34 years, Serbia, Census 2011

- **Ethnicity:** 86% of them are Serbian
- **Partner status:** 73% of them are out of unions, 19% live in marital and 8% in extra-marital unions
- **Education attainment:** most of them got a university degree (48%) or completed secondary school (45%)
- **Economic activity:** 81% of them are active, 64% employed
- **Type of residence:** 78% of them live in urban settlements

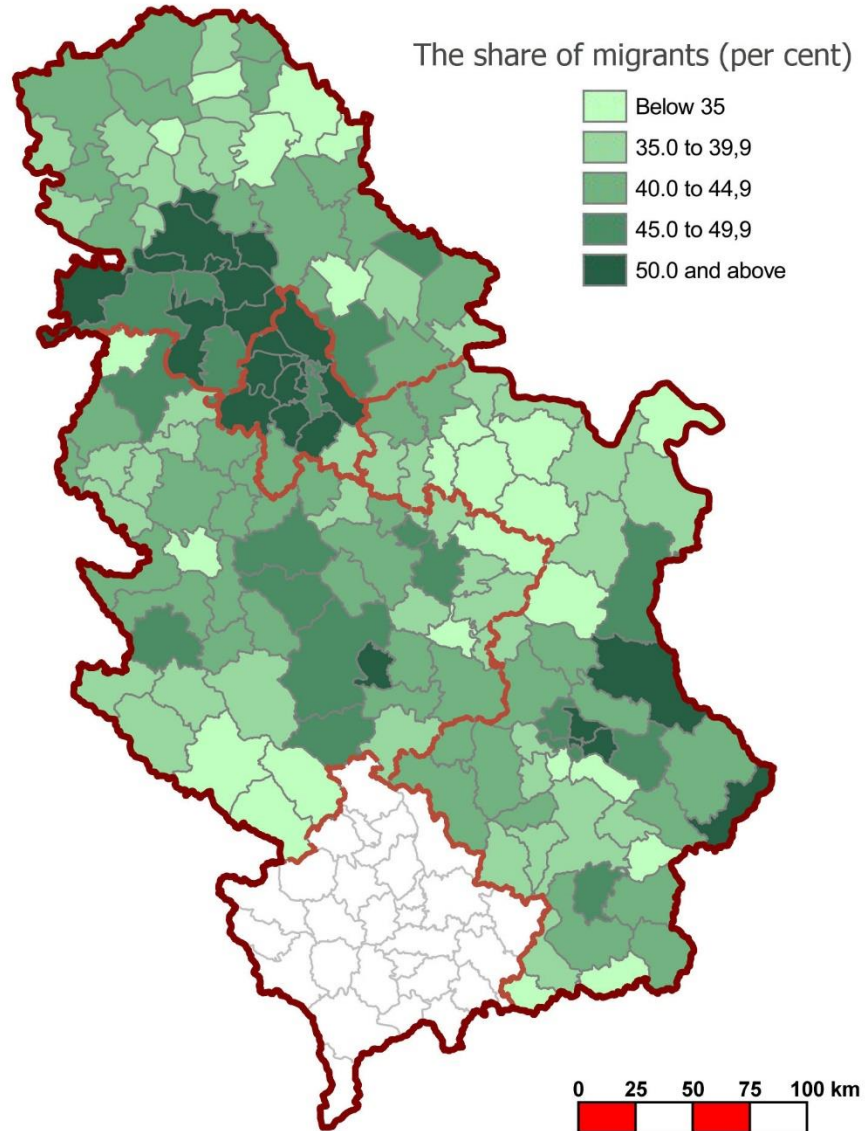
Author: M. Rašević

## Impact of migration on the population dynamics of Serbia between the Census 2002 and 2011

- Incomplete comparability between the Census 2002 and 2011
- Average annual net emigration was between 6 and 11 thousand migrants
- Impact of migration on population decline of Serbia was 15–26%
- Decrease in number and share of the population in migration-prone ages

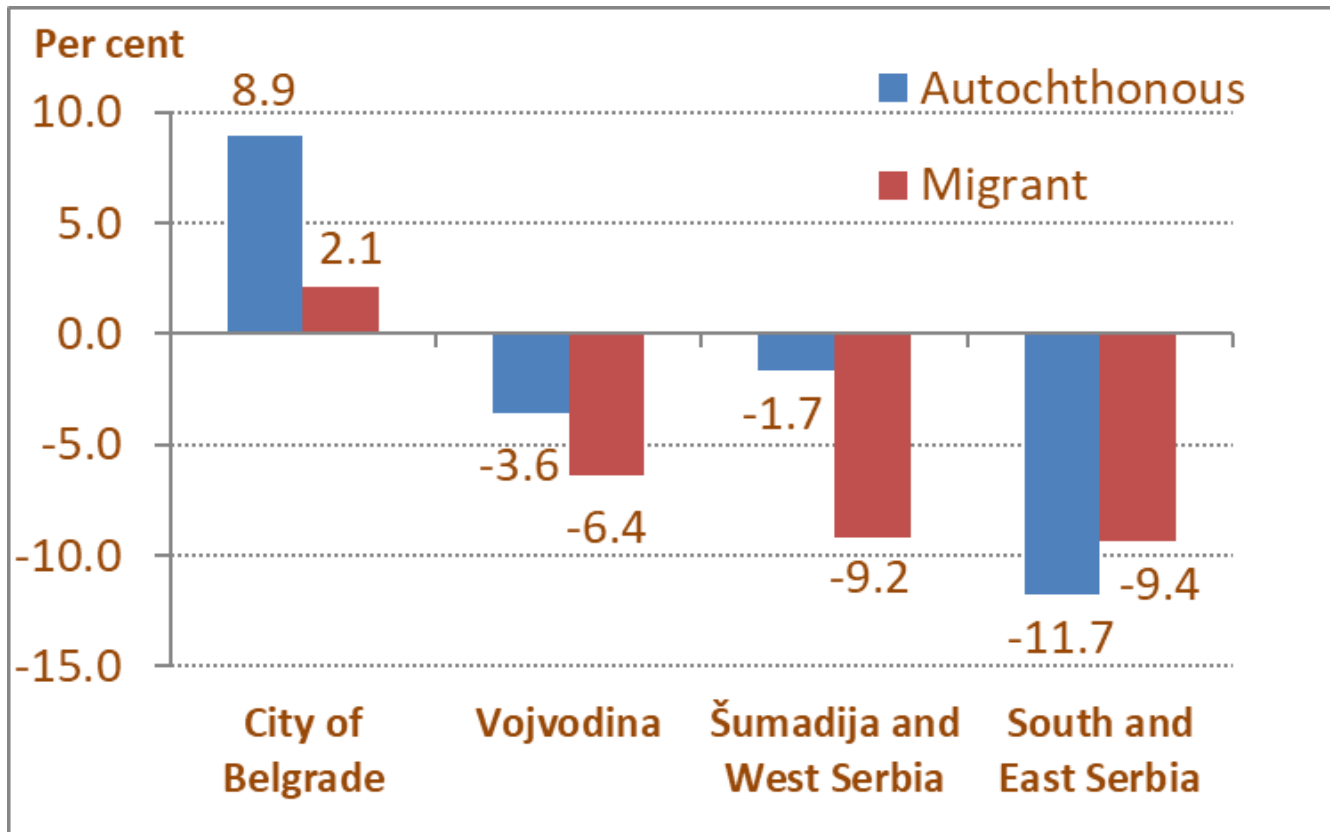
# The share of persons that ever changed their residence in total population

— municipalities, Census 2011 —



Author: V. Nikitović

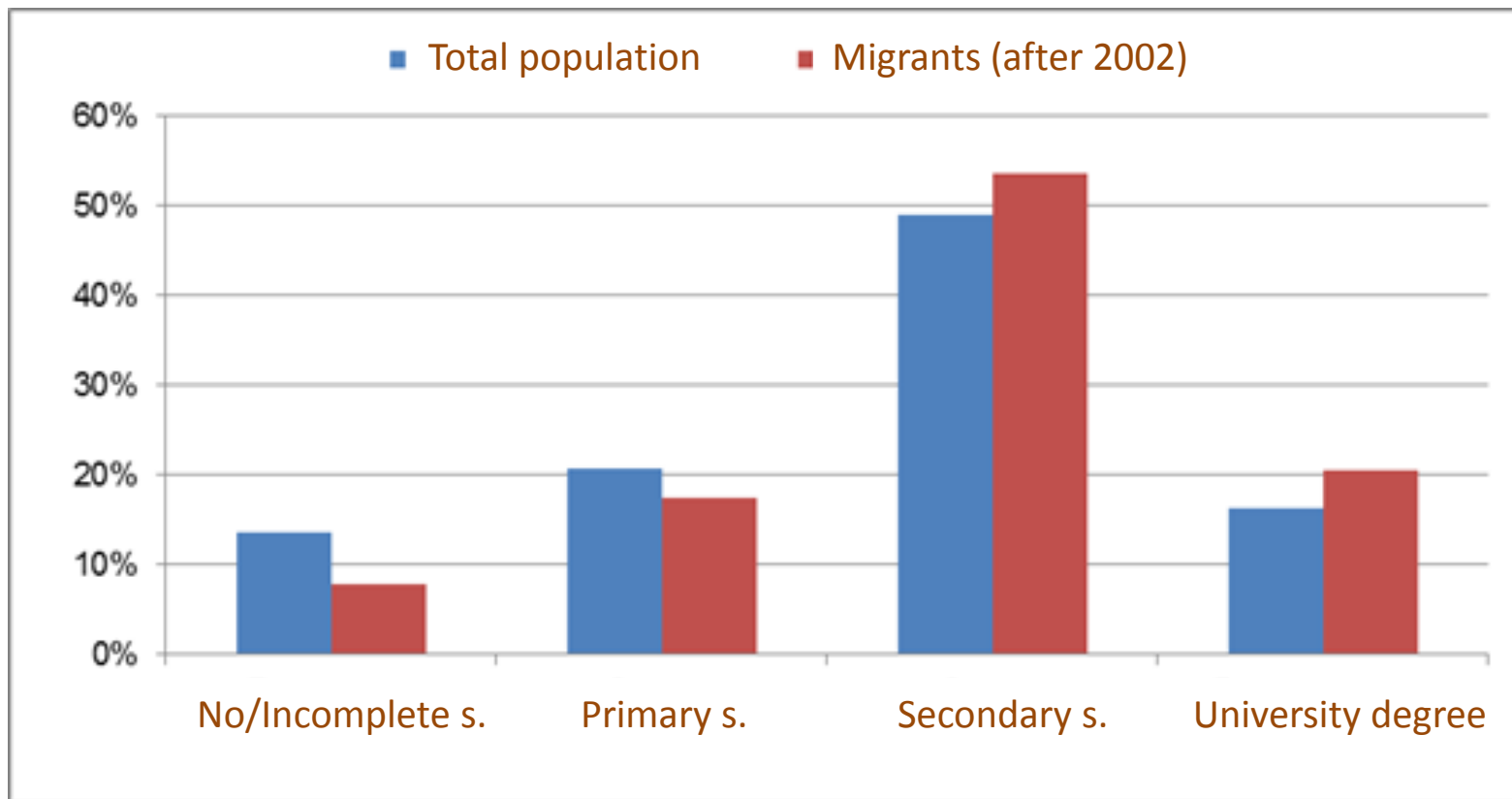
# Relative change (per cent) in the size of autochthonous and migrant population, across regions, 2002–2011



Author: V. Nikitović



## Population of Serbia older than 15 years by educational attainment — migrants (after 2002) and total population, Census 2011 —

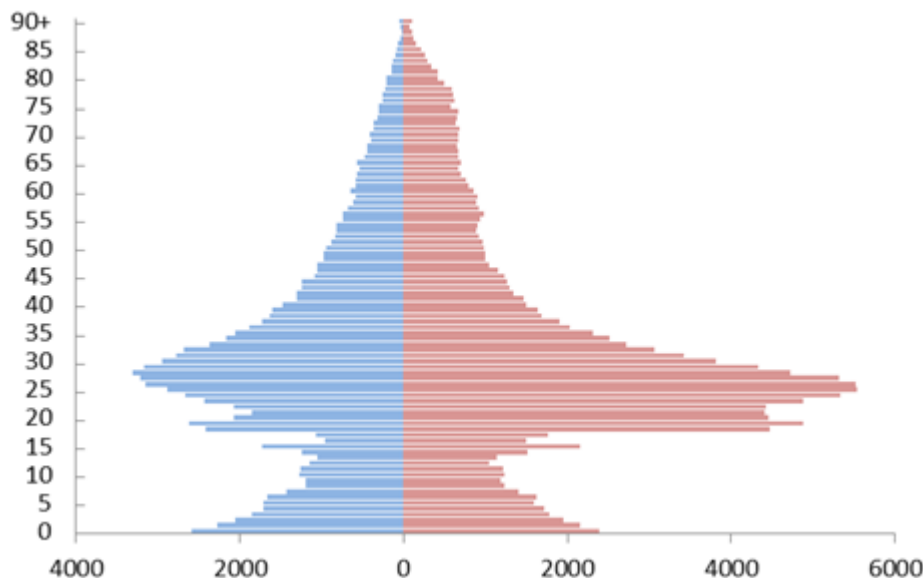


Author: V. Nikitović, J. Predojević-Despić, I. Marinković

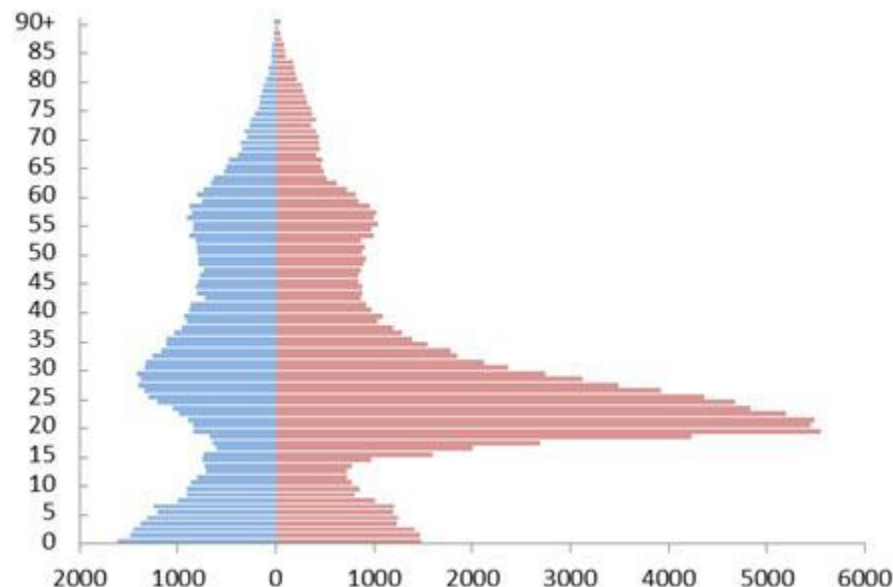


# Population of Serbia that changed their residence after 2002 — by sex and age at the time of resettlement, Census 2011 —

Migrants to urban settlements



Migrants to other settlements

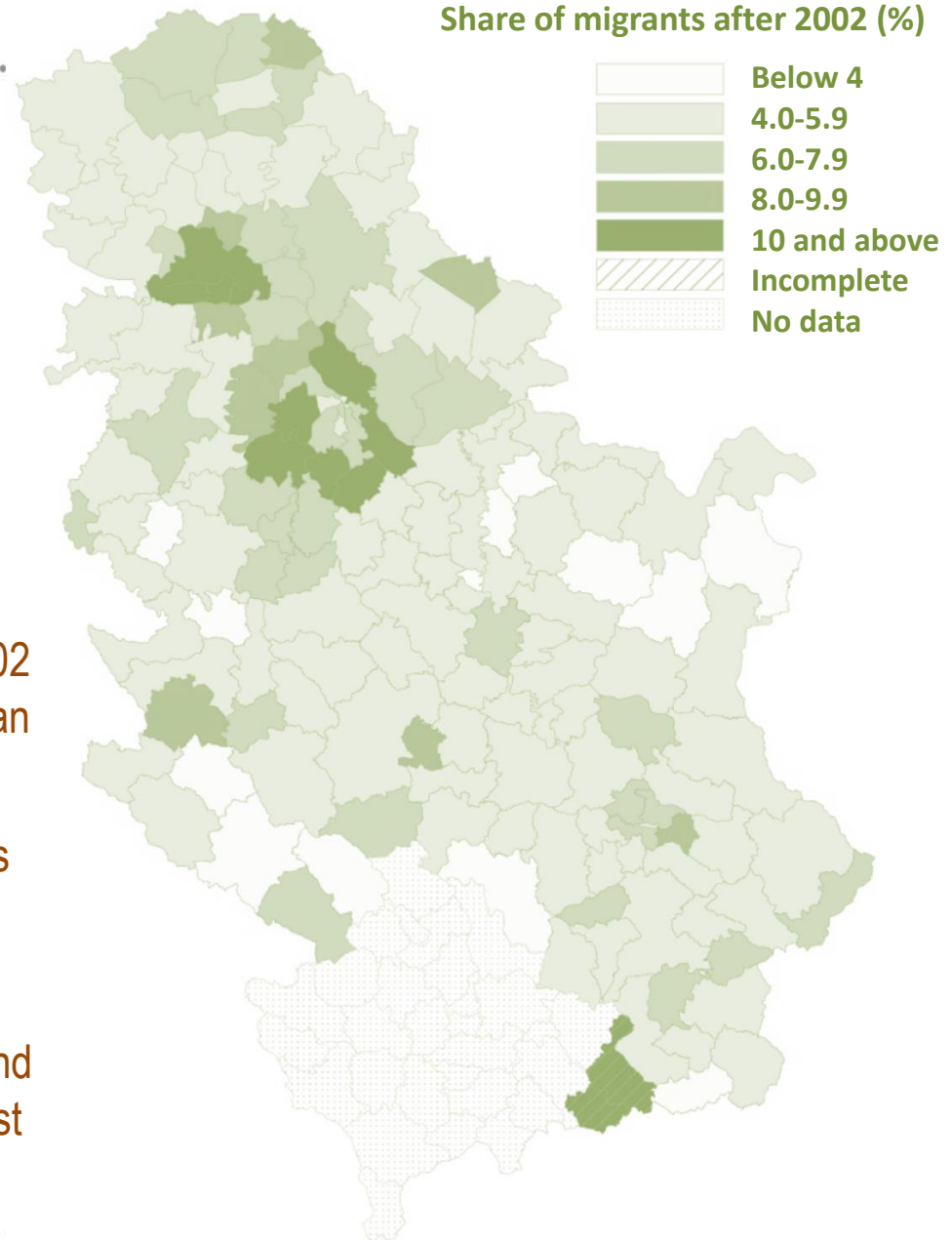


Authors: V. Nikitović, J. Predojević-Despić, I. Marinković

## Migrant population in the Census 2011

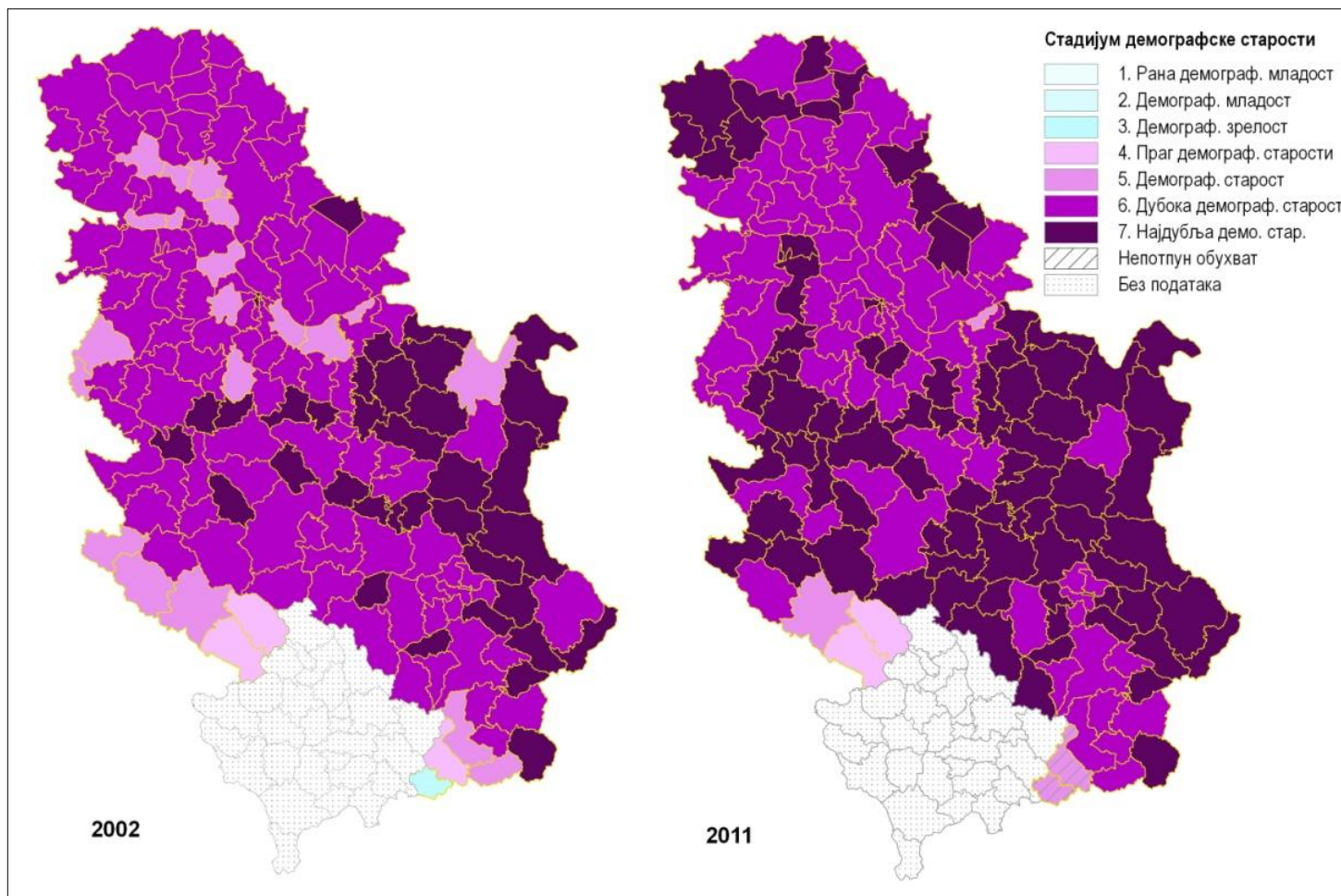
- Decline in the share of migrant population, even in the region of the City of Belgrade
- Migrants from ex-Yugoslavia account for 90% of all immigrants from abroad
- Most of people who migrated after 2002 resides in the areas of the largest urban centers
- Extremely low spatial mobility of males in non-urban settlements
- Structures of migrants by education and economic status considered for the first time

Share of migrants after 2002 (%)



Authors: V. Nikitović, J. Predojević-Despić, I. Marinković

# Stadiums of demographic ageing across municipalities, Census 2002 and 2011

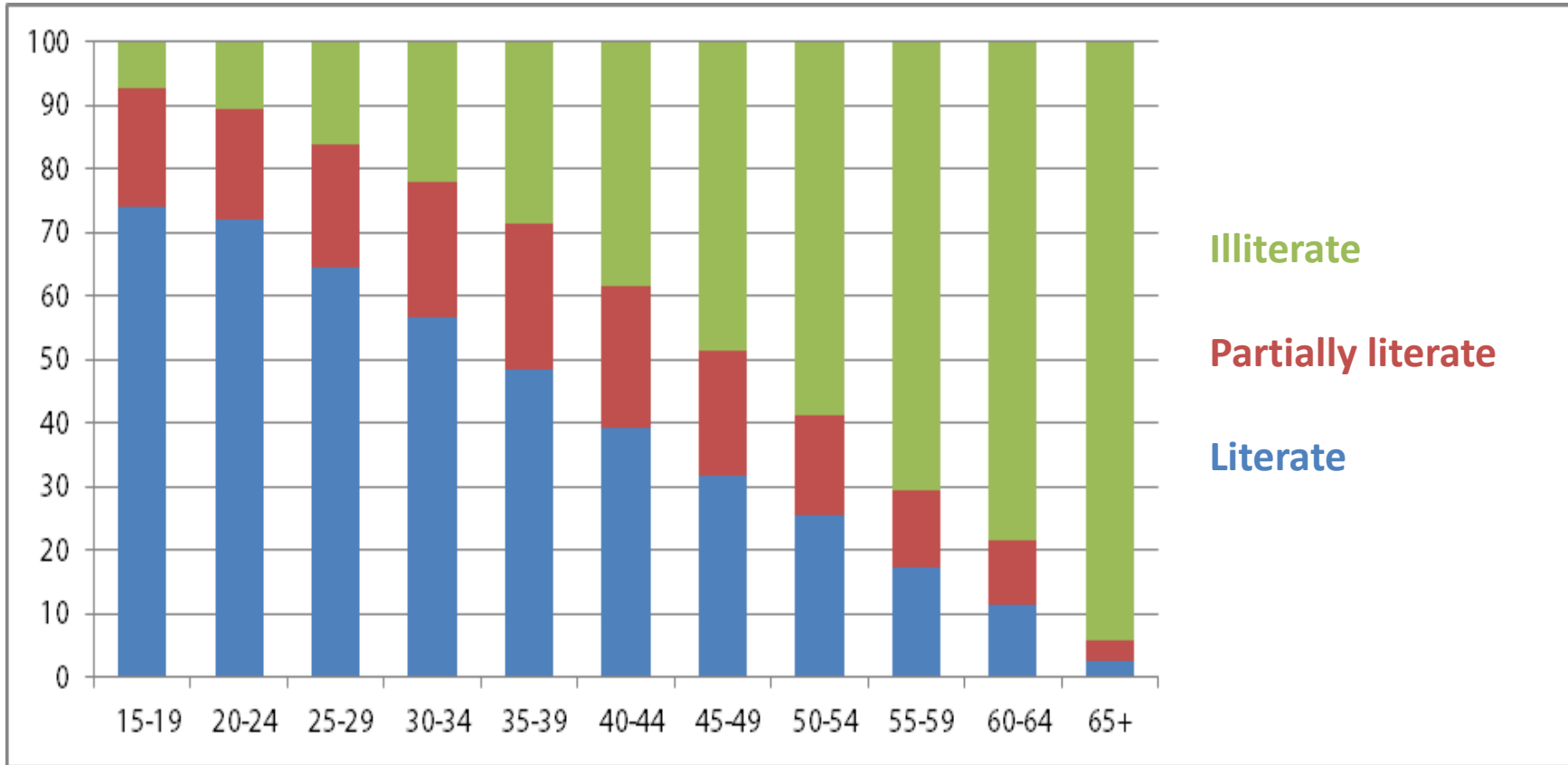


Author: G. Penev



Подржано од стране Европске уније

## Computer literacy of population by age, Serbia, Census 2011



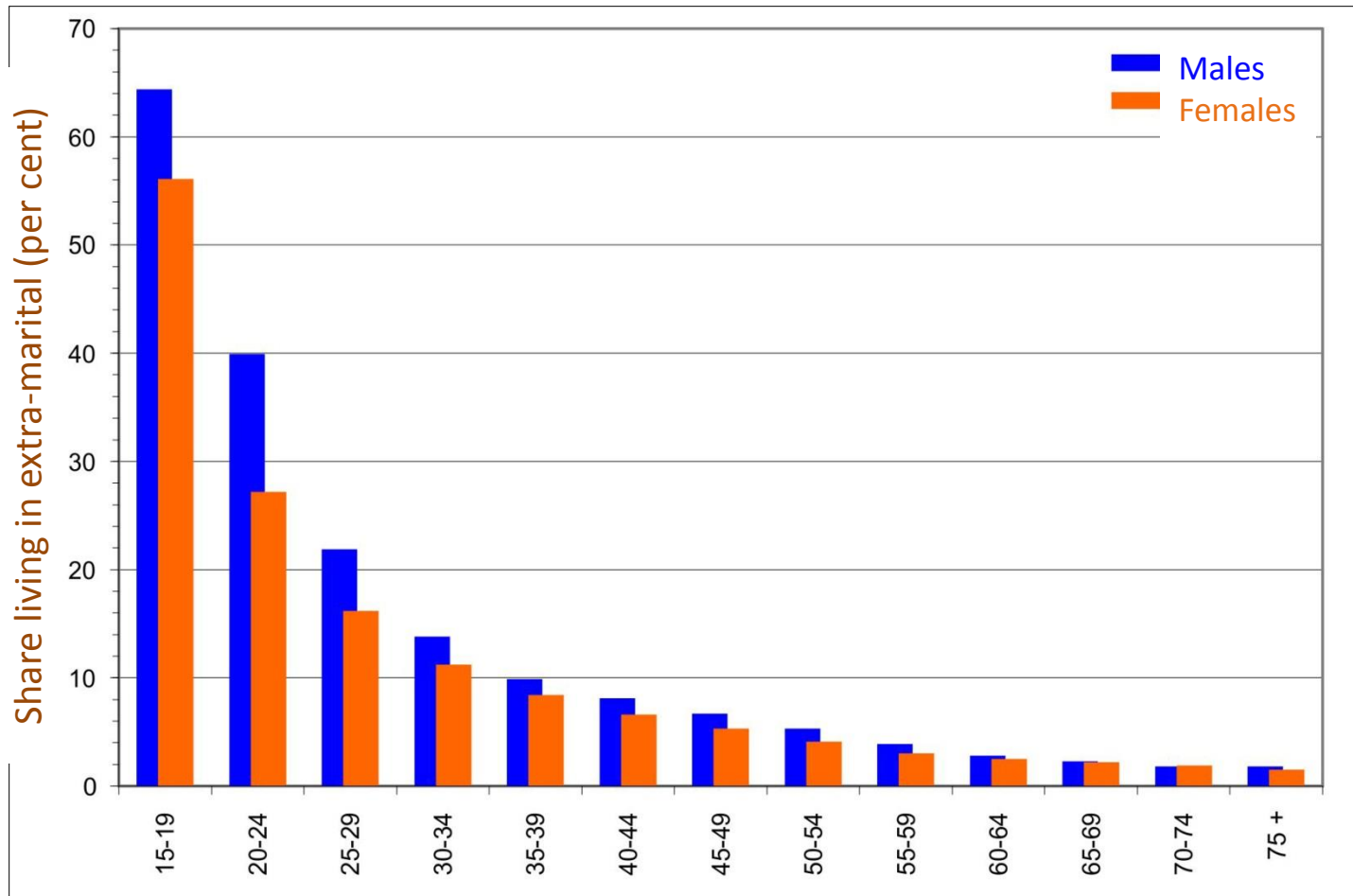
Author: A. Šobot



Подржано од стране Европске уније



## The share of persons living in extra/marital unions in the total number of those living in unions, by sex and age, Census 2011



Author: B. Stanković

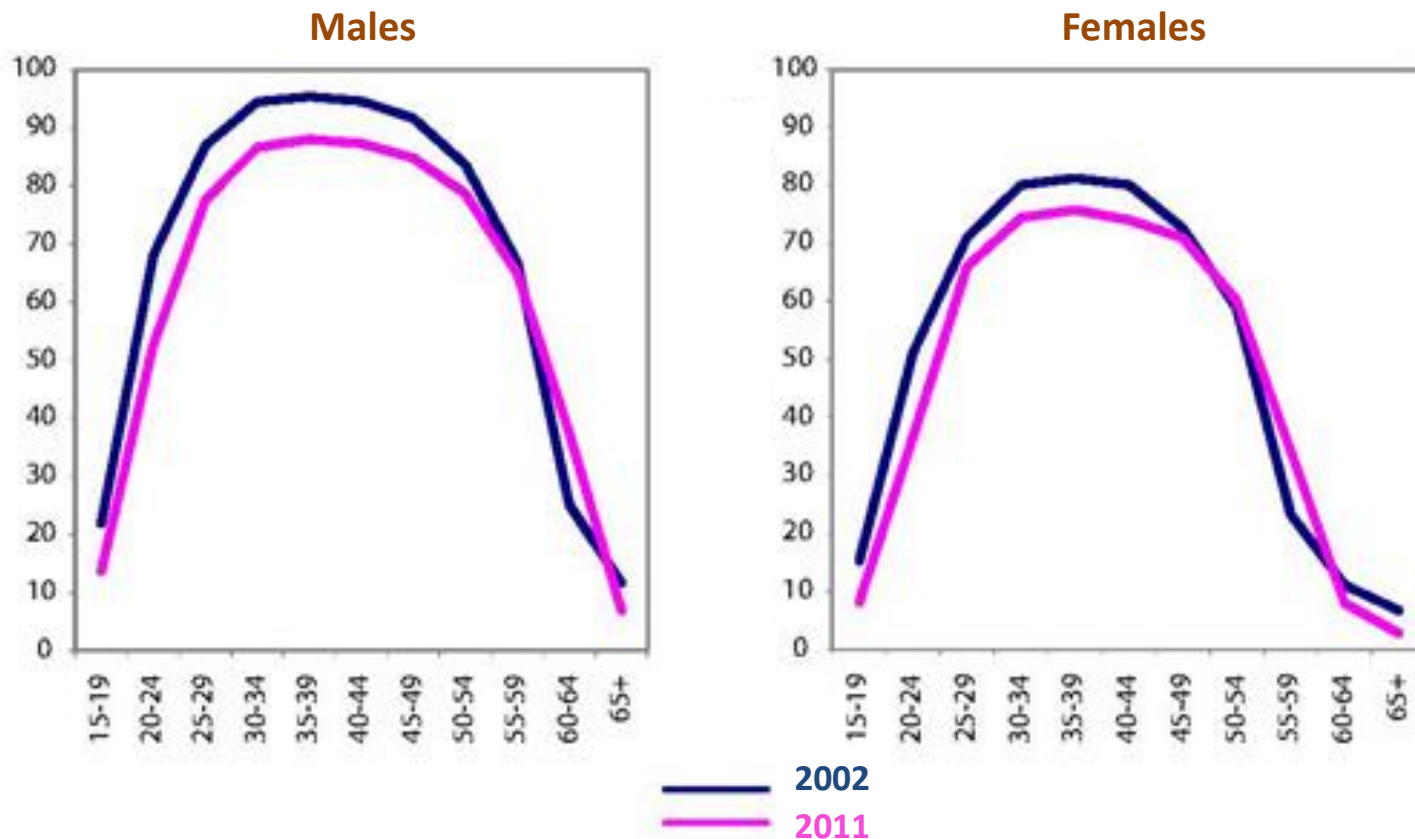


# Economic structures of population in Serbia, Census 2011

- Labor force decrease: -427,000 (12.6%)
- Decrease in activity rate: 53,8% → 48,2%
- Low employment — high unemployment  
45.8% — 22.9%
  - Low economic activity and employment
- Youth
  - High unemployment
- Increase in service activities and occupations
- Increase in number of pensioners  
1,628 thousand ( 22.7%)



# Economic activity rates of population in Serbia — by sex and age, Census 2011 —



# POPULATION OF SERBIA AT THE BEGINING OF THE 21st CENTURY

Vladimir Nikitović  
v.nikson@gmail.com

Demographic Research Center  
Institute of Social Sciences, Belgrade

